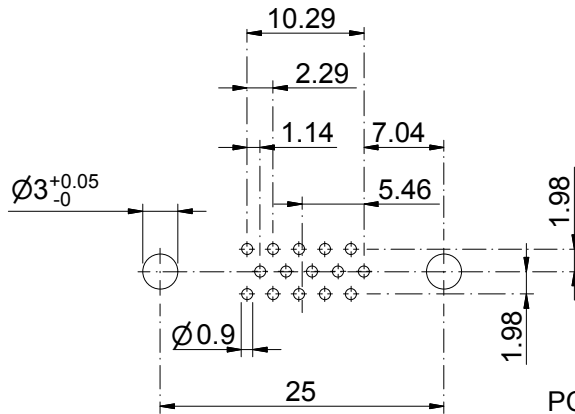
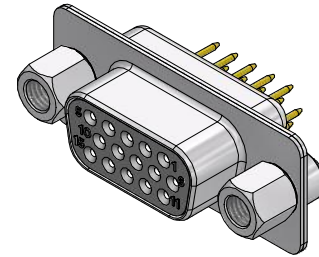
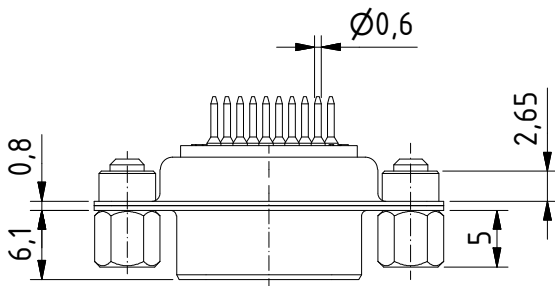
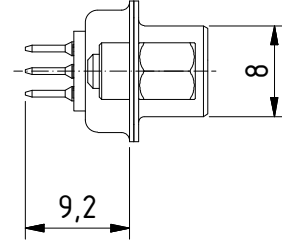
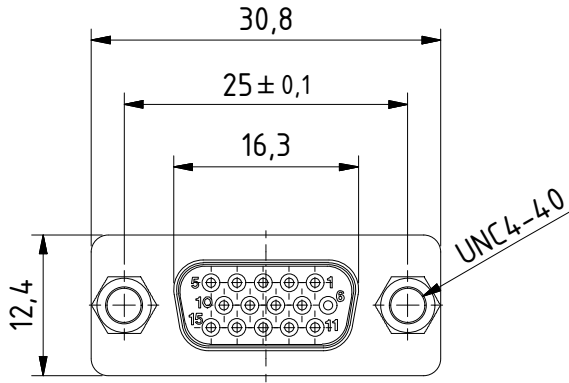


RoHS compliant



PCB Layout  
tolerances +/-0.1

General tolerances (Delttron standard)			
size in mm	> 3	> 6	> 30
> 0.5	up to 3	up to 30	up to 120
tolerances			
±0.1	±0.2	±0.2	±0.3

**MATERIALS**

- Insulator: Thermoplastic UL 94-V-0 white
- Contact: Copper alloy
- Contact finish: Quality class 2
- Shell: steel tin plated

**CHARAKTERISTICS**

- Working voltage: 60V
- Current rating: 3A
- Contact resistance: max. 10mΩ - DIN41652
- Insulation resistance: >5GΩ
- Temperature range: -55° to +125°C

modification	Rev. a) 13.12.2009	Rev.	Rev.	DE009895		
	Rev.	Rev.	Rev.	part no.		
HD-D15SY/2M85UNB5	1.5:1 scale	drawn	26.08.2009	nf		
		checked				
		approved				
 Industrie Neuhof 8c CH-3422 Kirchberg			K060474 a drawing no.			