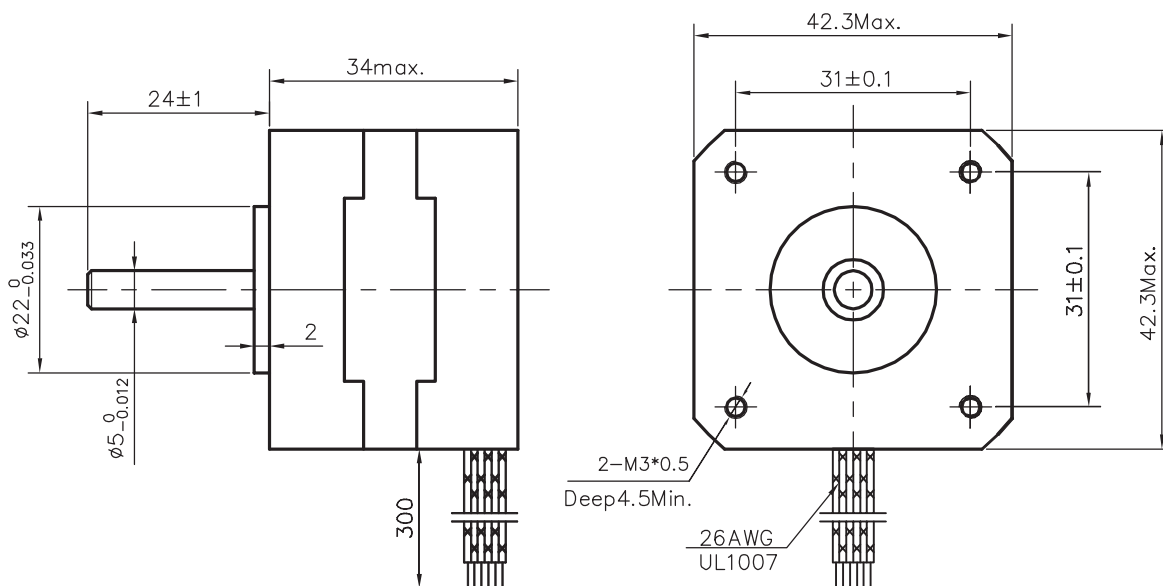


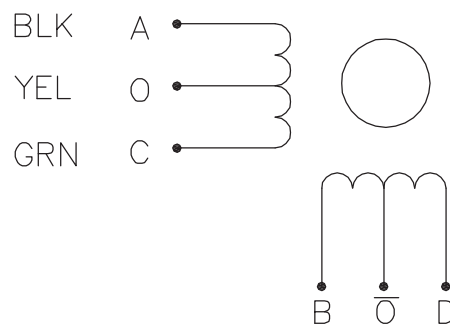
Dimension:
Unit=mm



Specifications:

Phase	4		Comment
Step Angle	0.9	deg.	
Voltage	4.0	V	
Current	0.95	A	
Resistance	4.2	Ω	
Inductance	4.0	mH	
Holding Torque	1.6	kg.cm	
Insulation Class	B		
Mass	0.22	kg	

Wiring Diagram:



RED WHT BLU