

# Switch

## Tact Switch Series

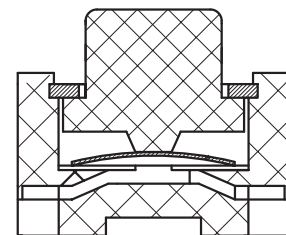
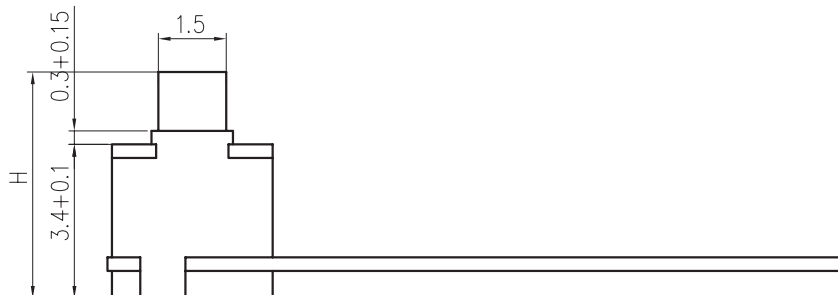
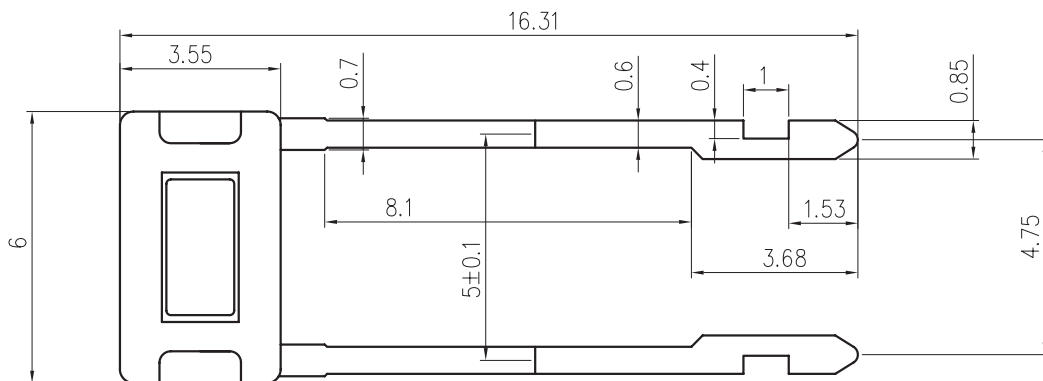
### TS3616 3x6 Tact Switch Series

#### ELECTRICAL

1. Rating: 20mA 12Vdc
2. Contact Resistance : 50mΩ Max.
3. Insulation Resistance: 100MΩ Min.
4. Dielectric Strength : AC250V(50/60Hz for 1minute)
5. Electrically Life: 100, 000cycles
6. Environment temperature: -25°C~+70°C
7. Operating Force: 160/250(±30gf)
8. Seal temperature: 260°C~ 280°C



VII



## ORDER INFORMATION

TS3616 - H1-160 -B

Part Number

Packing: B-Bulk  
Operating Force : 160~250gf  
Hight: H1 = 4.3mm H2 = 5.0mm